

LITTLE FLOWER CONVENT HIGH SCHOOL, SOLAPUR
SCIENCE AND TECHNOLOGY PART - II
1ST SEMESTER -2021-2022

Time – 2 Hours

Std: X

Marks: 40

Note: -

1. All questions are compulsory
 2. Draw scientifically, technically correct labelled diagram.
 3. Start writing each main question on a new page.
 4. Figures to the right indicate full marks.
 5. For each MCQ correct answer write the alphabet of correct option only.
 6. For each MCQ (i.e. Q. No.1-B) evaluation would be done for first attempt only.
-

Q-I-A –Answer the following questions. (5)

- 1) The Causality behind the sudden changes was understand due to _____
- 2) State true or false
Only food stuff is sufficient for energy production
- 3) Give the names :
Hormones related with male reproductive system
- 4) Identify me :-
I am diploblastic and acoelomate. Which phylum do I belong to?
- 5) Find the odd man out :-
 CO_2 , SO_2 , NO_2 , H

Q-I-B- Choose the correct alternatives to fill in the blanks (5)

- 1) Bat is included in which class?
 - a) Amphibia
 - b) Reptilia
 - c) Aves
 - d) Mammalia
- 2) Maximum energy generation in India is done using _____ energy.
 - a) Thermal
 - b) Atomic
 - c) Nuclear
 - d) Solar

- 3) _____ divides by Simple binary fission
 a) Paramecium b) Amoeba c) Euglena d) Hydra
- 4) Process of glycolysis occurs in _____
 a) Nuclear
 b) Golgi bodies
 c) Cytoplasm
- 5) _____ occurs in germ cells and stem cells of the body.
 a) Karyokinesis
 b) Cytokinesis
 c) Mitosis
 d) Meiosis

Q-II- Attempt any five of the following questions

(10)

- 1) Match the following.

Column – A

- 1) Coal
- 2) Uranium
- 3) Water Reservoir
- 4) Wind

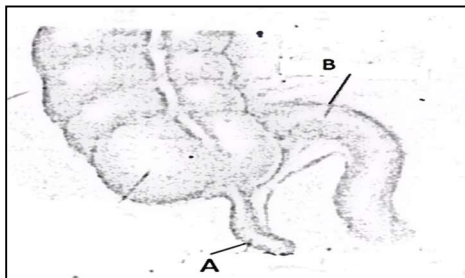
Column - B

- Potential Energy
 Kinetic Energy
 Nuclear Energy
 Thermal Energy

- 2) Give Scientific Reasons

Out body irritates if it comes in contact with jelly fish.

- 3) Observe the figure and answer the questions given below :-



- 1) Name the organ and define.
- 2) Label A and B

4) State the differences between (any 4 Points)

1) Pisces and Amphibia

5) 1) What are vitamins?

2) Name the different types of vitamins?

6) Complete the paragraph by filling the blanks from the options given below :

(Vegetative reproduction, sexual reproduction, eyes, buds, nodes, roots)

Reproduction in plants with the help of vegetative parts is called as _____.

Vegetative propagation in potatoes is performed with the help of _____.

In Bryophyllum it is performed with the help of _____ present on leaf margin. In

case of sugarcane vegetative propagation occurs with the help of buds present on

_____.

7) What are the problems associated with hydroelectric power plant?

Q-III- Attempt any five of the following questions

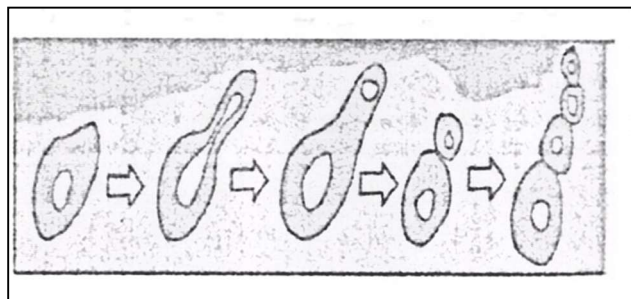
(15)

1. a) Prepare a concept map for the solar thermal power station.

b) State the function of photovoltaic cell?

2. Body temperature of reptiles is not constant? Why.

3. Observe the figure and write short notes on it?



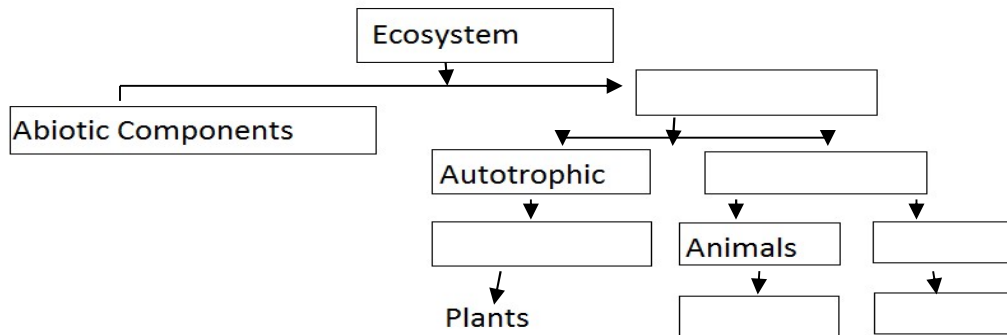
4. Answer the following questions :-

1) What is genetic diversity?

2) Why energy in coal is called chemical energy?

3) What is green energy?

5. Draw a well labeled diagram of cockroach and write the classification.
6. Explain some of the main objections raised against Darwin’s theory?
7. Complete the flow chart.



Q-IV. Attempt any one

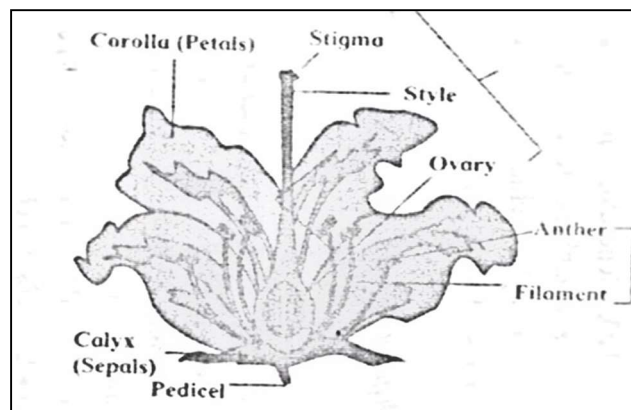
(5)

1. a) Why does human being have an important place in the environment?
- b) Arrange the phylum in chronological orders.

Porifera, Chordata, Hemichordate, Cnidaria Echinodermata, Platyhelminthes, Mollusca, Aschelminths, Arthropoda, Annelida

2. Observe the figure and answer the following questions: -

- 1) What is a
- 2) Name the whorls of a flower?
- 3) What do you mean by bisexual flower?
- 4) What is a flower?
- 5) What are Carpels?



flower?
 accessory
 mean by
 pedicellate
 Stamens and
